

13 Victoria Street  
Liverpool  
L1 6JS



# 13 Victoria Street

## £124,950

### Full Description

Exclusive Off-Plan Opportunity: Prime City Centre Development (L1 Postcode)

We are proud to introduce our brand-new residential development, comprising 62 high-spec one and two bedroom apartments across seven floors, located in the heart of Liverpool's coveted L1 postcode, one of the city's most in-demand rental areas.

This is a rare opportunity to secure an off-plan investment in a prime central location undergoing significant regeneration and growth.

Each apartment has been carefully designed to maximise tenant appeal, featuring elongated windows that flood the interiors with natural light, Juliet balconies, and modern, neutral-toned finishes throughout.

### Investment Highlights:

- Only 25% deposit required
- Up to 20% below market value
- Estimated rental yields of up to 10%
- One-bedroom apartments from £130,000
- Two-bedroom apartments from £190,000
- L1 postcode location

### Why Invest in Liverpool?

Liverpool attracts over £1 billion in investment annually and welcomed 67.3 million visitors last year, with overnight stays expected to rise a further 20%. The city's central areas, especially L1, are experiencing strong demand from professionals, students, and short-term visitors alike, making it an ideal environment for high-yield property investment.

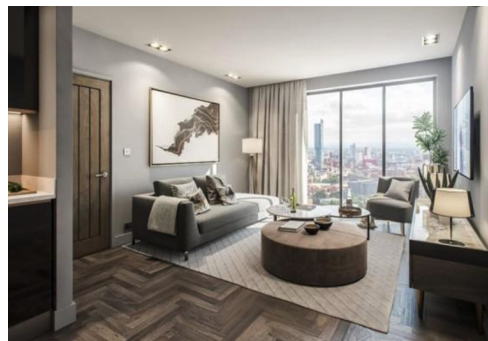
With over 20 years of combined experience in the UK property market, our team is ready to support your investment goals from start to finish.

Contact us today on 0151 244 5431 to receive the full investment brochure and reserve your unit in this exceptional L1 development.

### Local Authority

### Council Tax Band C

### EPC Rating



### Contact

0161 470 1184

[info@eliterealtyinvest.co.uk](mailto:info@eliterealtyinvest.co.uk)